

CARING FOR YOUR NEW BATH FITTER® UNIT



**BATH
FITTER®**





Thank you for choosing BATH FITTER®.

As with any purchase of this nature, we understand that this was an important investment for your home, one that you will need to properly maintain. BATH FITTER® surfaces are engineered and manufactured with the highest quality materials to ensure a long and useful life; proper maintenance will allow you to fully benefit from this.

The following guidelines have been formulated to provide you with instructions for the proper maintenance of your new BATH FITTER® products.

**FOR AN UPDATED ELECTRONIC VERSION OF THIS DOCUMENT VISIT OUR WEBSITE AT
www.bathfitter.com.**



CARING FOR YOUR NEW BATH FITTER® UNIT

Based on your needs and use, regular maintenance on your part will be necessary to care for your new BATH FITTER® product.

Cleaning:

It is recommended to remove such things as soap residue from your tub/shower unit and silicone areas by cleaning with an approved cleaner. Regular cleaning will keep your new unit looking great for years to come.

TIPS:

- ✔ Cleaning the silicone regularly with a 50/50 mix of water and regular chlorine bleach will help kill any germs and/or bacteria lying on the surface.
- ✔ An environmentally friendly solution of water and white vinegar will also do a great job eliminating mildew on silicone and is cost effective.

Approved Cleaners:

Your Installer has left a copy of the approved cleaner list, BATH FITTER® regularly re-tests the products to ensure the ingredients have not changed. For an updated [approved cleaner list](#), we recommend you visit www.bathfitter.com every six (6) months to update your list.

***PLEASE NOTE:** The use of unapproved cleaners on our products may cause damage therefore rendering our warranty void. ONLY use approved cleaners.

Use of Aerosol Sprays

The use of any type of aerosol spray will result in irreparable damage to the acrylic surface and will void the warranty. Please refer to the latest recommended cleaners list on bathfitter.com > cleaning & maintenance > household cleaners.

Tobacco

The affect of tobacco smoke in close proximity of your BATH FITTER® unit may discolor the product and is NOT recommended.

IMPORTANT

CAUTION - IT IS WELL KNOWN THAT WET, SOAPY SURFACES CAN BE SLIPPERY. PLEASE BE EXTREMELY CAREFUL WHEN BATHING. THE APPLICATION OF A BATH FITTER® SLIP RESISTANT COATING TO YOUR TUB OR SHOWER FLOOR IS AVAILABLE AS AN OPTION.

PLUMBING & VALVE INFORMATION

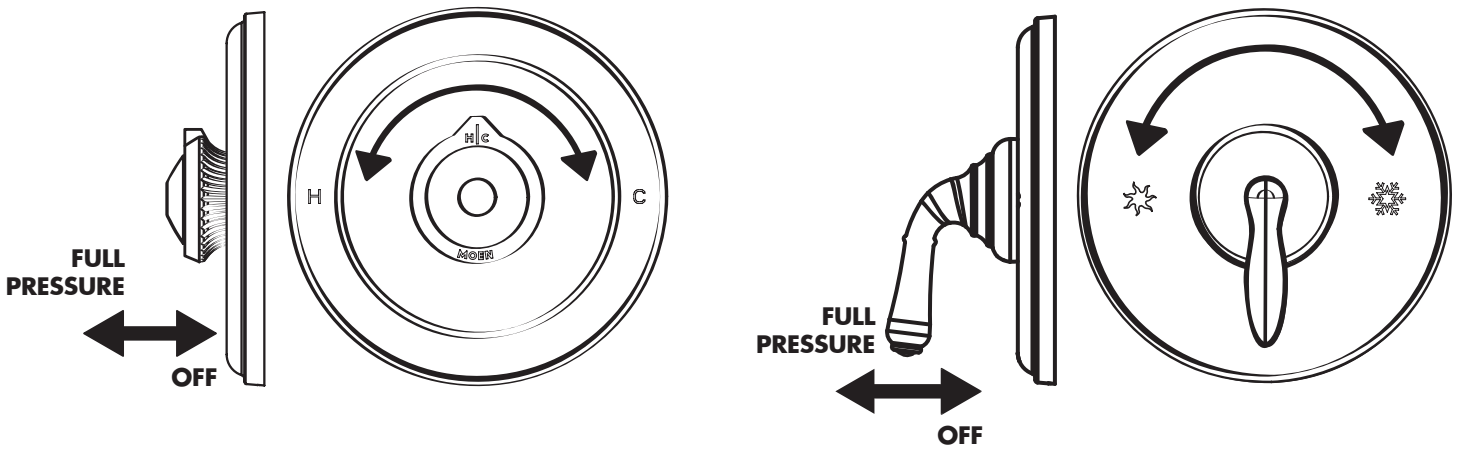
Moen® Moentrol® Valve

Maintains constant balance between hot and cold water for total comfort. This valve includes an adjustable water volume to suit your personal preferences, a **Temperature Limit Stop* as a safety feature and also has a ***Temperature Memory Feature*.

The Moentrol® Valve operates by pulling the knob out to control water flow. Once the knob is pulled out to turn the water on, it is then rotated to select a temperature setting. Left for hot, right for cold, or a mix of both in the middle.

To turn the water off, simply push the knob straight in. The next time you pull the knob out to use the faucet, ***the temperature setting will be the same as it was when you last used it*.

**Temperature Limit Stop allows you to control the degree of heat of the water temperature.*

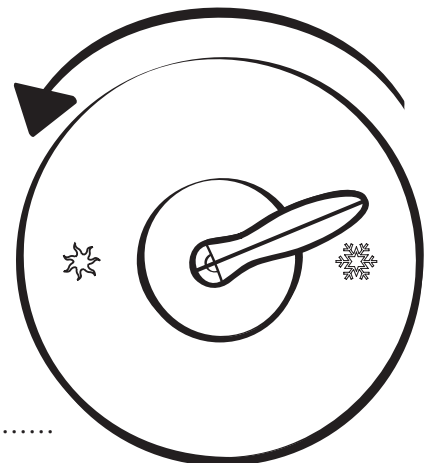


Moen® Positemp® Valve

Maintains a constant balance between hot and cold water for total comfort. This valve includes a **Temperature Limit Stop* as a safety feature.

**Temperature Limit Stop allows you to control the degree of heat of the water temperature.*

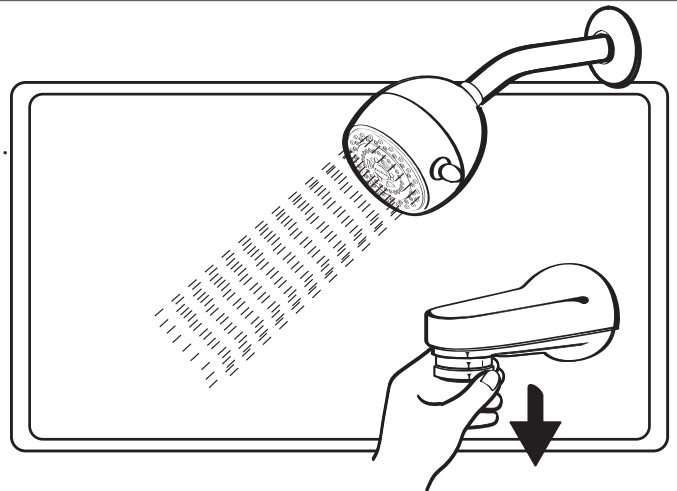
The Positemp® Valve operates by turning the handle counterclockwise to start the water flow. To change the water temperature to a higher (hotter) temperature, keep turning the handle counterclockwise until you reach your desired temperature. To turn the faucet off, turn the handle all the way back clockwise until the water flow stops.....



PLUMBING & VALVE INFORMATION

Delta® faucet set with diverter spout:

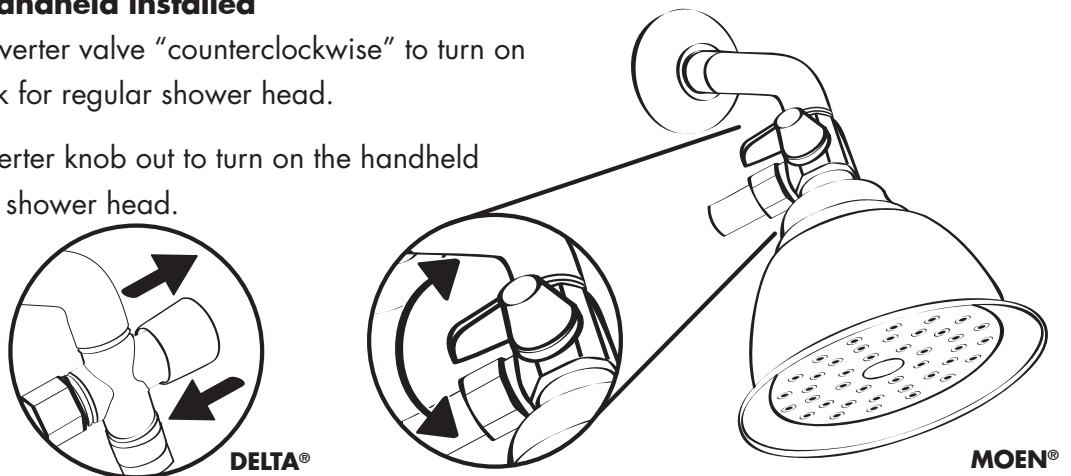
To activate the shower head, pull down on the water nozzle under the tub spout



Diverter Operation with handheld installed

Moen®: For Moen® turn the diverter valve “counterclockwise” to turn on handheld function – turn it back for regular shower head.

Delta®: For Delta® pull the diverter knob out to turn on the handheld function – push it in for regular shower head.

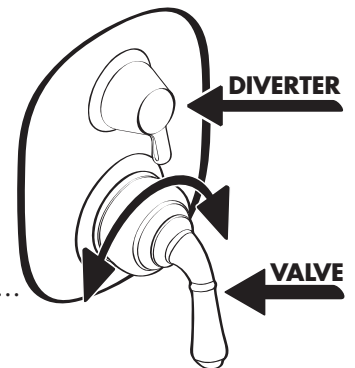


Moen® 3 Function Trim Kit Moentrol®

For a Moen® 3 function valve, the diverter will divert (change) the water locations from

- 1) the shower head,
- 2) the handheld shower head,
- 3) combination of both.

The valve turns the water on and changes the water temperature.....
Refer to Moentrol® valve for more details.



NOTE:

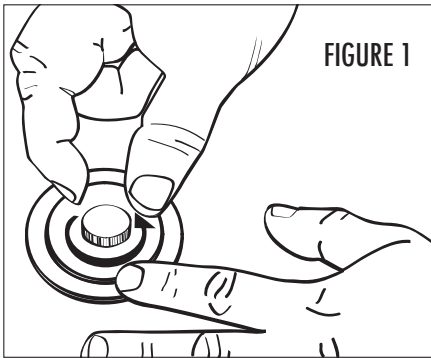
- ✓ If for any reason your water temperature is not satisfactory, **DO NOT** attempt to change the settings yourself. Please call BATH FITTER® to have a Technician stop by to adjust it.
- ✓ **Water pressure** If you have changed the valve/tap system to a newer model (regardless if it is from BATH FITTER® or not), you may notice that the water pressure may feel different. This is due to the fact that all valves now have a “water-saver” feature built into them.

PLUMBING & VALVE INFORMATION

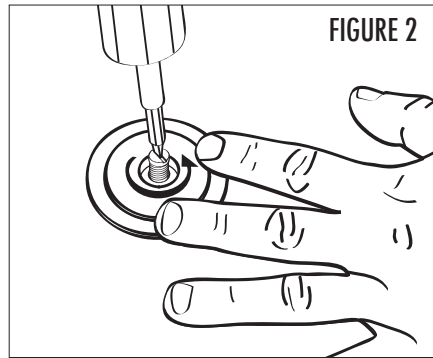
To clean the drain:

It is recommended that you clean hair and debris out of the pop-up stopper if you notice that the water is taking longer than normal to drain from the tub. Use these easy to follow instructions for removal of the pop-up stopper.

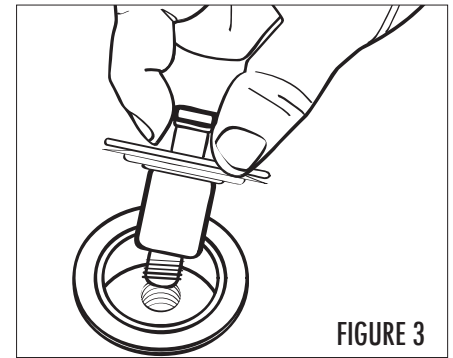
(FIGURE 1 – 3)



Hold stopper and turn chrome cap counterclockwise



Use slotted screwdriver to turn brass screw counterclockwise



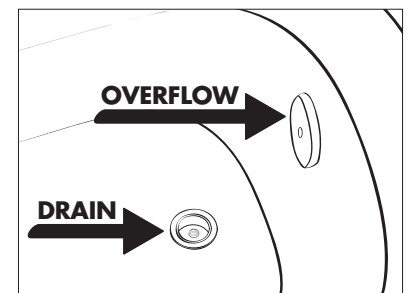
Pull out stopper, clean hair from drain and re-install stopper

Un-clogging drain:

PLEASE NOTE:

The use of any chemical drain “plungers” such as Drano, Liquid Plumber etc. will result in irreparable damage to the acrylic surface and will void the warranty.

To free up a clogged drain, remove the pop-up stopper, verify that it is not clogged with hair. If not clogged by hair then fill the bottom of the bathtub with approximately 1” of water and use a plunger. If you notice that there is not enough suction to free up the clog (because air is passing through the overflow) remove the overflow cover and stuff a plastic bag into the opening to block the air passing through. Continue to use the plunger.



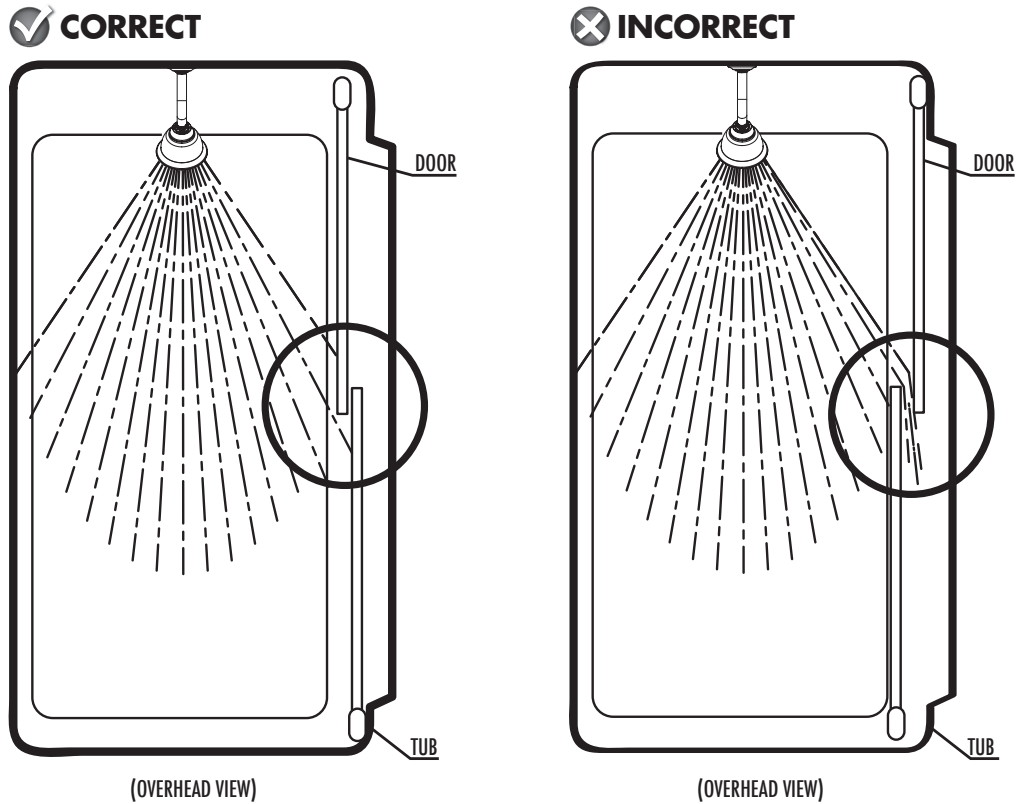
If the above steps do not unclog your drain, BATH FITTER® recommends another low cost natural solution. Remove stopper pour equal parts baking soda and white vinegar into the drain. Next pour hot water into the drain. Re-install the pop-up stopper.

If these methods fail it may be necessary to call in a plumber.

TUB & SHOWER DOOR INFORMATION

Proper close position

The design of the BATH FITTER® tub and shower doors require that the inner door be closed as shown (see correct method below) in order to prevent water from the shower head from spraying between the glass panels and out into the bathroom (see incorrect method below).



GRAB BARS

Grab bar beauty rings

The BATH FITTER® grab bars have beauty rings covering the wall anchors. These rings are for esthetics and are not meant to be tightly fixed to the wall anchors. These beauty rings may have a certain amount of movement. This is normal.

